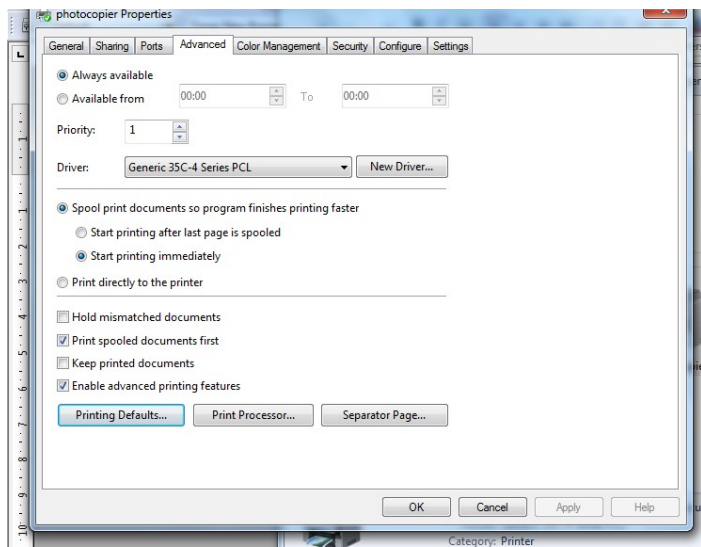


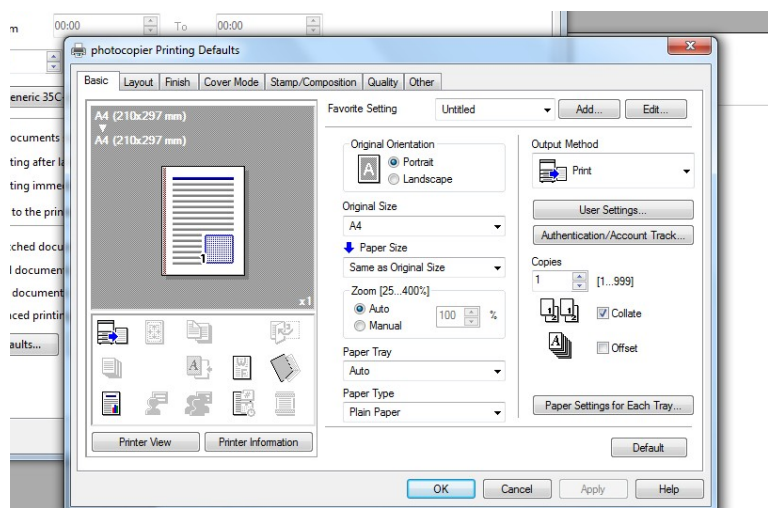
Paper Type Errors

Check that the paper types set at the machine are the same as the paper types set in the print driver settings.

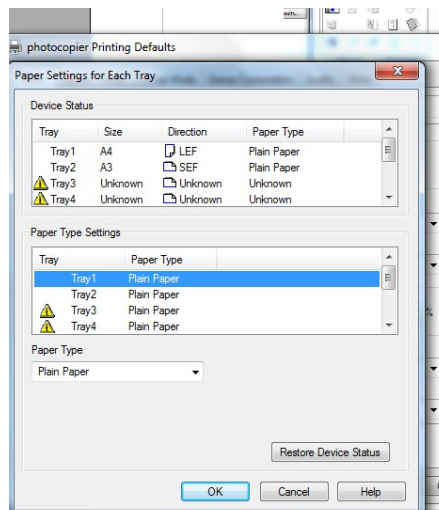
1. In your PC's start menu, select "Control Panel".
2. Choose "Printers and Faxes" (On Vista PCs choose "Printers" and on Windows 7 PCs choose "Printers and Devices").
3. Right-click on the printer and choose "Properties" ("Printer Properties" on Windows 7).
4. Go to the "Advanced" tab and click "Printing Defaults".



5. Click "Paper Settings For Each Tray...".



6. Change each tray to the desired paper type setting by highlighting the tray in the "Paper Type Settings" menu and selecting your chosen paper type using the drop down menu.



7. Click “OK”.

8. Click “Apply” and “OK”.

9. Right-click the printer again and select “Printing Preferences”.

10. Repeat steps 5-8.